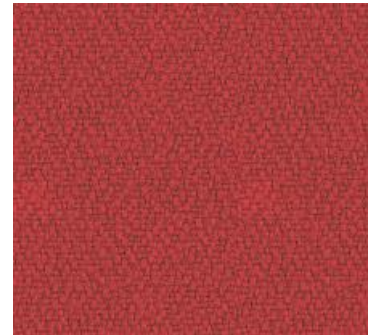
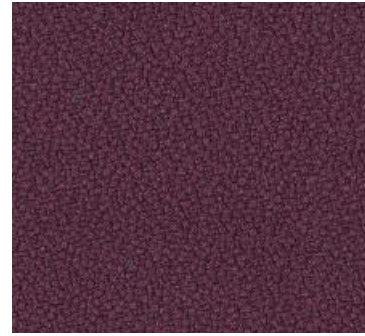




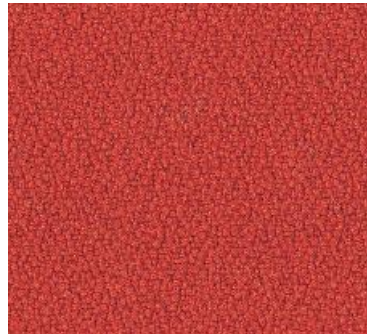
0525 glut YS079



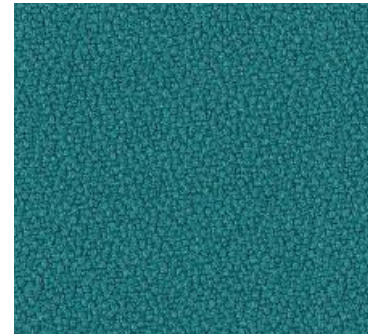
0528 tomate YS106



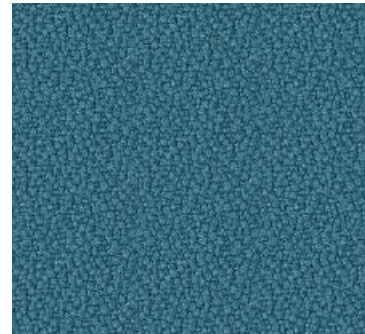
0501 brombeer YS030



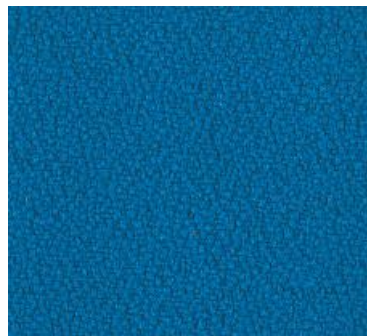
0524 orange YS076



0522 türkis YS047



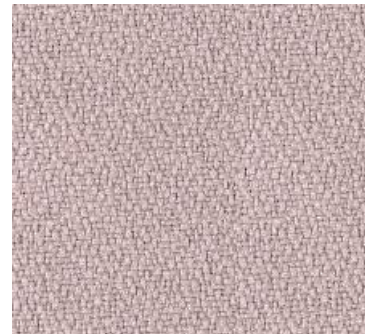
0529 steel YS083



0507 sea YS082



0506 tinte YS026



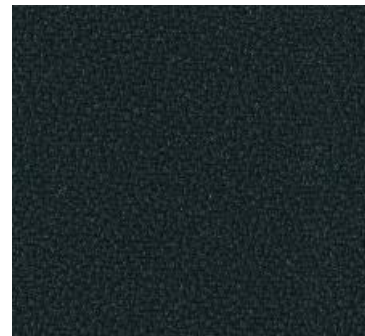
0512 ice YS094



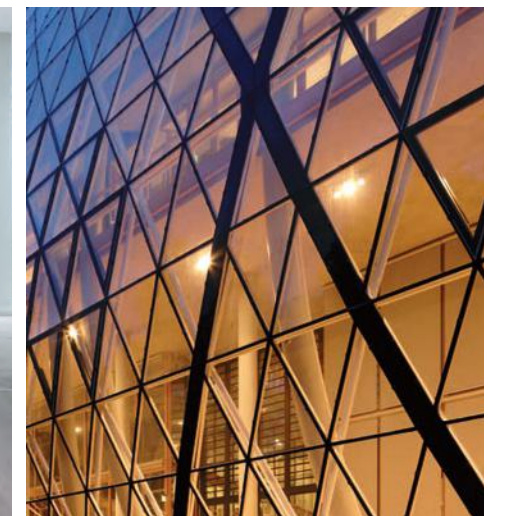
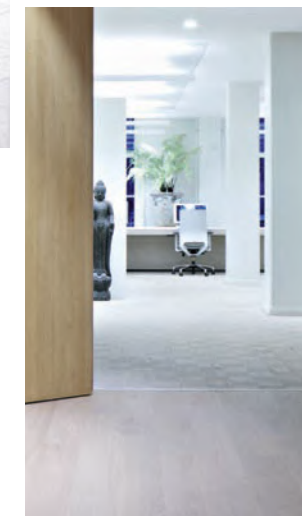
0520 grau YS081



0515 stone YS046



0514 schwarz YS009



MALTA

MALTA (Camira Xtreme Plus) Technische Daten	Preisgruppe 5
Material: 100% Recyceltes Polyester FR	
Stoffgewicht/lfm: 435 g +/- 5%	
Breite: 140 cm +/- 5%	
Scheuertouren: 100.000 (DIN EN ISO 2-12947, Martindale)	
Lichtechtheit: 6 (DIN EN ISO -105B02)	
Pilling (Knötchenbildung): 5, pillt nicht (BS EN ISO 12945-2 : 2000)	
Reibechtheit nass/trocken: 4/4 (DIN EN ISO -105X12)	
Brandschutznormen: Schwer entflammbar (DIN 4102 B1; BS EN 1021, part1&2; BS 7176:2007 Low Hazard; BS 5852:2006 Section 4 Ignition Source 5; BS 7176:2007 Medium Hazard;	
UNI 8456 & UNI 9174 Class 1) ¹	
Ökologie: Nicht schwermetallhaltige Farbstoffe; Second nature™ recycled; Umweltverträglich (EU-Umweltzeichen „Die Blume“)	

Verschiedene Fertigungspartien gewährleisten nicht immer eine exakte Übereinstimmung der Farben und Strukturen. Geringe Abweichungen bei Nachlieferungen berechtigen nicht zum Ersatzanspruch.

MALTA (Camira Xtreme Plus) Technische specificaties	Prijsgroep 5
Materiaal: 100% Recycled Polyester FR	
Stofgewicht/str.m.: 435 g +/- 5%	
Breedte: 140 cm +/- 5%	
Aantal toeren: 100.000 (DIN EN ISO 2-12947, Martindale)	
Lichtechtheid: 6 (DIN EN ISO -105B02)	
Pluizen: 5, pluist net (BS EN ISO 12945-2 : 2000)	
Wrijvingechtheid nat/droog: 4/4 (DIN EN ISO -105X12)	
Brandveiligheidsnormen: Moeilijk ontvlambaar (DIN 4102 B1; BS EN 1021, part1&2; BS 7176:2007 Low Hazard; BS 5852:2006 Section 4 Ignition Source 5; BS 7176:2007 Medium Hazard;	
UNI 8456 & UNI 9174 Class 1) ¹	
Ecologie: Kleurstoffen die geen zware metalen bevatten; Second nature™ recycled; Milieuvriendelijk (EU-milieukeurmerk „De bloem“)	

Door verschillende productiepartijen is niet altijd een exacte overeenstemming van de kleuren en structuren gewaarborgd. Geringe afwijkingen bij naleveringen zijn onontkoombaar en geven geen recht op schadevergoeding.

MALTA (Camira Xtreme Plus) Technical data	Price group 5
Material: 100% Recycled Polyester FR	
Fabric weight/lm: 435 g +/- 5%	
Width: 140 cm +/- 5%	
Abrasion resistance: 100.000 (DIN EN ISO 2-12947, Martindale)	
Light fastness: 6 (DIN EN ISO -105B02)	
Pilling: 5, no pilling (BS EN ISO 12945-2 : 2000)	
Colour fastness to rubbing wet/dry: 4/4 (DIN EN ISO -105X12)	
Fire Resistance Standards: Flame retardant (DIN 4102 B1; BS EN 1021, part1&2; BS 7176:2007 Low Hazard; BS 5852:2006 Section 4 Ignition Source 5; BS 7176:2007 Medium Hazard;	
UNI 8456 & UNI 9174 Class 1) ¹	
Ecology: Non metallic dyestuffs; Second nature™ recycled; Environmentally sound (EU Eco-label „the Flower“)	

If different production lots are used, it is not always possible to guarantee an exact match of colours and textures. Slight variations in subsequent batches are not grounds for a compensation claim.

MALTA (Camira Xtreme Plus) Caractéristiques techniques	Groupe de prix 5
Composition: 100% Polyester Recyclé FR	
Poids du tissu/ml: 435 g +/- 5%	
Largeur: 140 cm +/- 5%	
Nombre de tours d'abrasion: 100.000 (DIN EN ISO 2-12947, Martindale)	
Tenue à la lumière: 6 (DIN EN ISO -105B02)	
Boulochage: 5, ne bouloche pas (BS EN ISO 12945-2 : 2000)	
Résistance au frottement à humide/sec: 4/4 (DIN EN ISO -105X12)	
Normes anti-feu: Difficilement inflammable (DIN 4102 B1; BS EN 1021, part1&2; BS 7176:2007 Low Hazard; BS 5852:2006 Section 4 Ignition Source 5; BS 7176:2007 Medium Hazard;	
UNI 8456 & UNI 9174 Class 1) ¹	
Ecologie: Teintures non métalliques; Second nature™ recycled; Compatibilité environnementale (éco-label européen „La fleur“)	

Le fractionnement de la fabrication ne permet pas de garantir une totale similitude des teintes et des structures. De légères différences lors de livraisons ultérieures ne constituent pas un motif de remplacement.



Klöber GmbH | Hauptstraße 1 | 88696 Owingen/Bodensee | Germany
Tel. 0) 75 51-838-0) +49 | Fax 0) 75 51-838-142) +49 | www.kloeber.com | info@kloeber.com

